

KlassicView

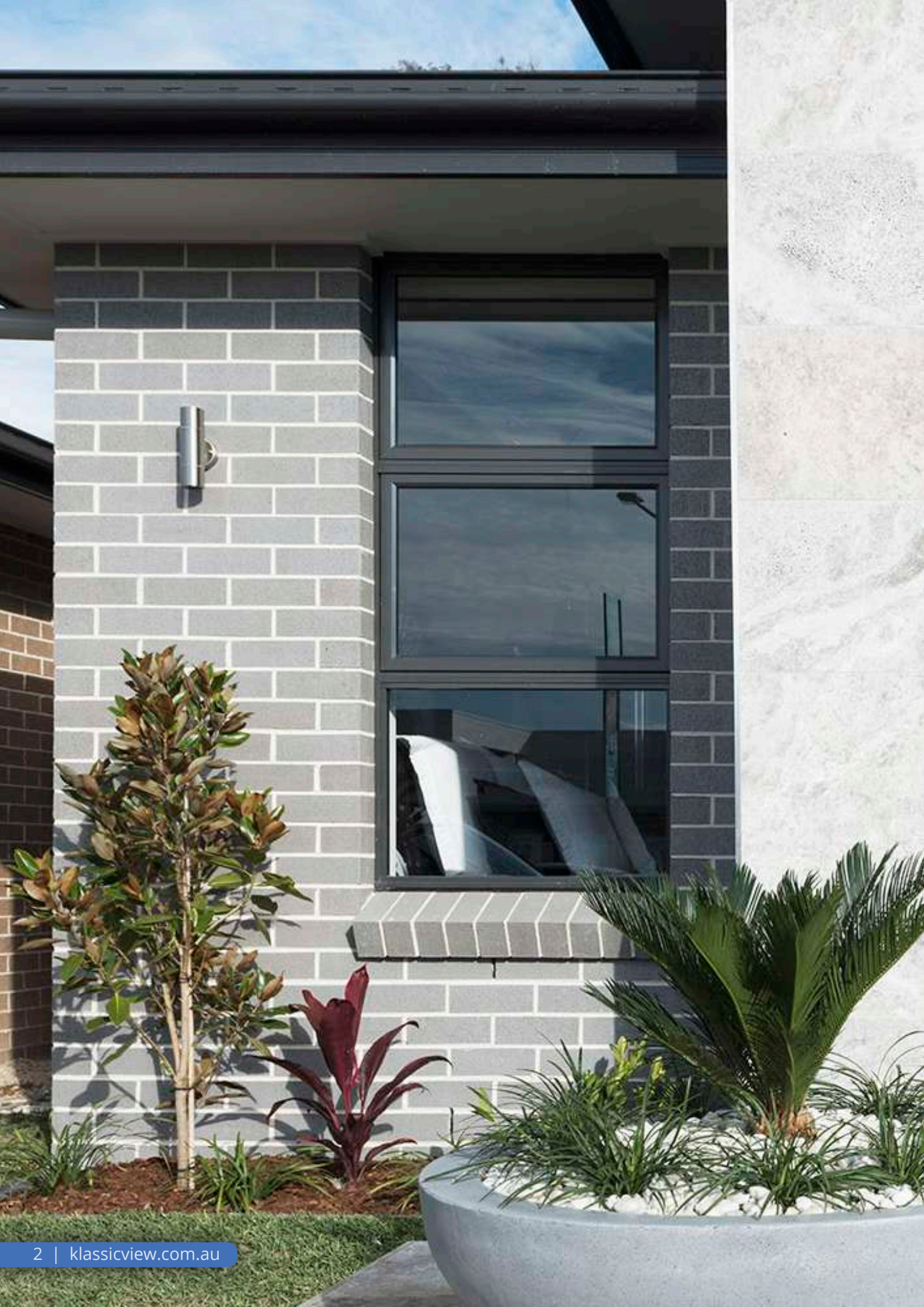
Residential Window & Door Systems

PRODUCT BROCHURE 3.0



A system by

DARLEY
ALUMINIUM



ABOUT KLASSICVIEW™

The KlassicView™ range of residential windows and doors are an ideal choice for modern architectural requirements, meeting the latest design trends and performance specifications.

Perfect for residential dwellings and semi-commercial buildings, the KlassicView™ range can be incorporated into a variety of louvre, awning, double hung and sliding configurations.

The Klassicview™ range consists of:

- 53 mm & 76 mm Sliding Windows
- 53 mm & 76 mm Awning Windows
- 53 mm & 76 mm Double Hung Windows
- 53 mm & 76 mm Fixed Windows
- 101.6 mm Louvre Windows
- 101.6 mm Sliding Doors & 165 mm Sliding Stacking Doors
- French Doors
- A range of adaptors to create a range of window and door combinations.





WERS

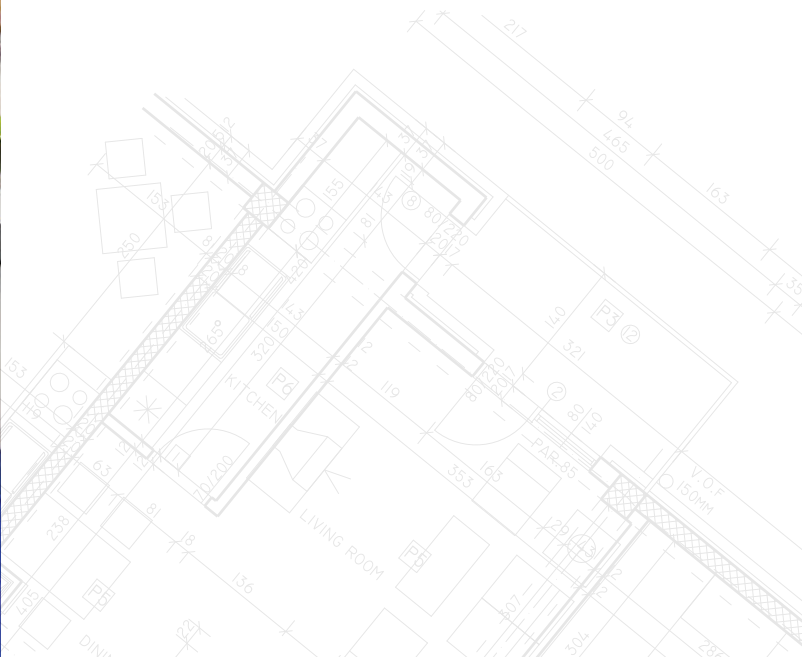
The Window Energy Rating Scheme (WERS) is accredited by the Australian Fenestration Rating Council (AFRC) and is compliant with the National Construction Code (NCC). Reports are prescribed for both the total window U-value (U_w) and the total window Solar Heat Gain Coefficient (SHGC).

U_w

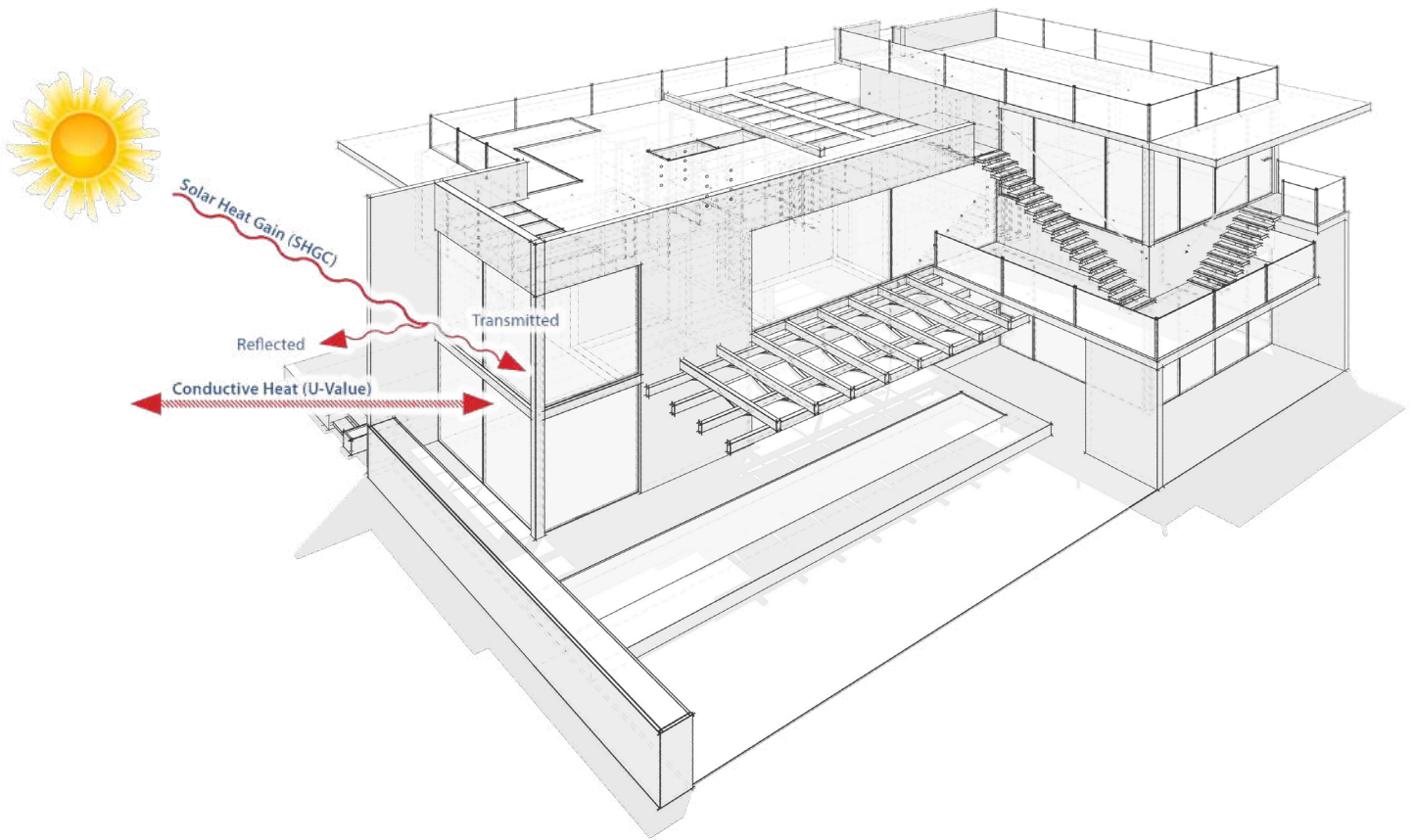
U_w measures heat conductivity, calculating the rate of non-solar heat loss or gain through the total window system (glass, framing, seals). The U_w helps indicate how well a window or door will reject heat during Summer and retain heat during Winter. A lower number indicates better performance.

SHGC

Solar Heat Gain Co-efficient (SHGC) measures the total window system's ability to block heat transfer through direct sunlight. SHGC is expressed as a number between 0 and 1. A lower number indicates better blocking performance; however, a higher number might be appropriate in cooler climates or with specific building orientations.



ENERGY SAVING



WERS RATINGS FOR THE KLASSICVIEW™ RANGE

SAMPLE SELECTION

Window ID	Frame	Glazing	Cooling Stars	Heating Stars	Cool%	Heat%	U _w	SHGC _w	T _{vw}	Air Inf
DAR-027-26	KlassicView 76mm Awning Window - Single Glazed	5SpGy	★★★☆☆	★★★☆☆	46%	13%	6.6	0.30	0.09	0.35
DAR-027-26	KlassicView 76mm Awning Window - Single Glazed	5SpGy	★★★☆☆	★★★☆☆	46%	13%	6.6	0.30	0.09	0.35
DAR-027-16	KlassicView 76mm Awning Window - Single Glazed	6AZTS21	★★★★☆	★★★☆☆	53%	18%	6.0	0.24	0.11	0.35
DAR-027-16	KlassicView 76mm Awning Window - Single Glazed	6AZTS21	★★★★☆	★★★☆☆	53%	18%	6.0	0.24	0.11	0.35
DAR-027-04	KlassicView 76mm Awning Window - Single Glazed	10.38EVGy	★★★★☆	★★★★☆	51%	33%	5.2	0.32	0.22	0.35
DAR-027-13	KlassicView 76mm Awning Window - Single Glazed	6.38TransLam	★★★☆☆	★★★☆☆	45%	16%	6.5	0.32	0.23	0.35
DAR-027-13	KlassicView 76mm Awning Window - Single Glazed	6.38TransLam	★★★☆☆	★★★☆☆	45%	16%	6.5	0.32	0.23	0.35

For a full list of ratings, visit Darley Aluminium's WERS at <http://awawers.net>



SLIDING WINDOW 53 MM & 76 MM

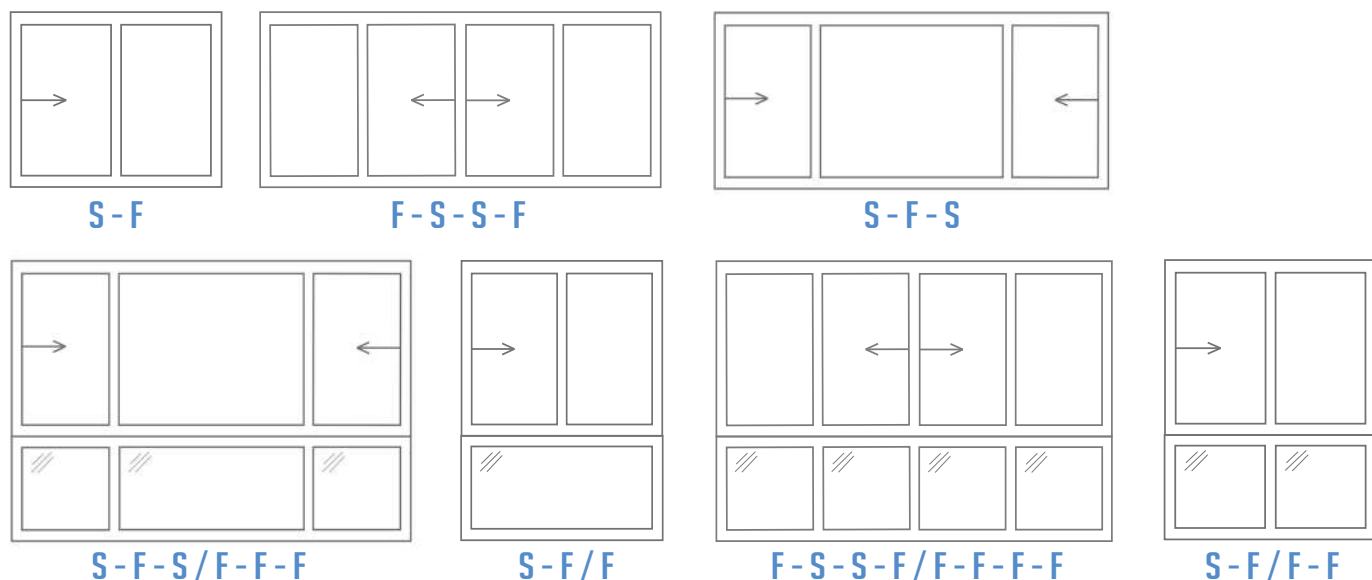
DESIGN FEATURES

Frame	53 mm	76 mm
Flyscreen available	•	•
Maximum weight per panel	40 kgs	80 kgs
Maximum height	1,500 mm	1,650 mm
Maximum sash width	1,200 mm	1,350 mm
Mullion centre locking system	•	•

OPTIONS

Frame	53 mm	76 mm
Accepts timber reveals	•	•
A range of interlocks available for high performance	•	•
Can be coupled to other ClassicView™ systems	•	•
Accepts glass thickness up to 10.38 mm single glazed	•	•
Accepts glass thickness up to 20 mm double glazed	na	•
Wide range of slide-fixed design combinations available including configurations with lowlights	•	•

STANDARD CONFIGURATIONS



TESTED TO AS2047



KLASSICVIEW™

	TEST REPORT NO.	WATER RATING PA	STRUCTURAL PA	ULTIMATE PA
53 mm Sliding Window *	AZT0223.14	250	1,700	2,100
76 mm Sliding Window *	AZT0245.13	200	1,800	2,700

*Performance ratings reflect a specific size and configuration. Test report data may not cover all configurations and sizes.



AWNING WINDOW 53 MM & 76 MM

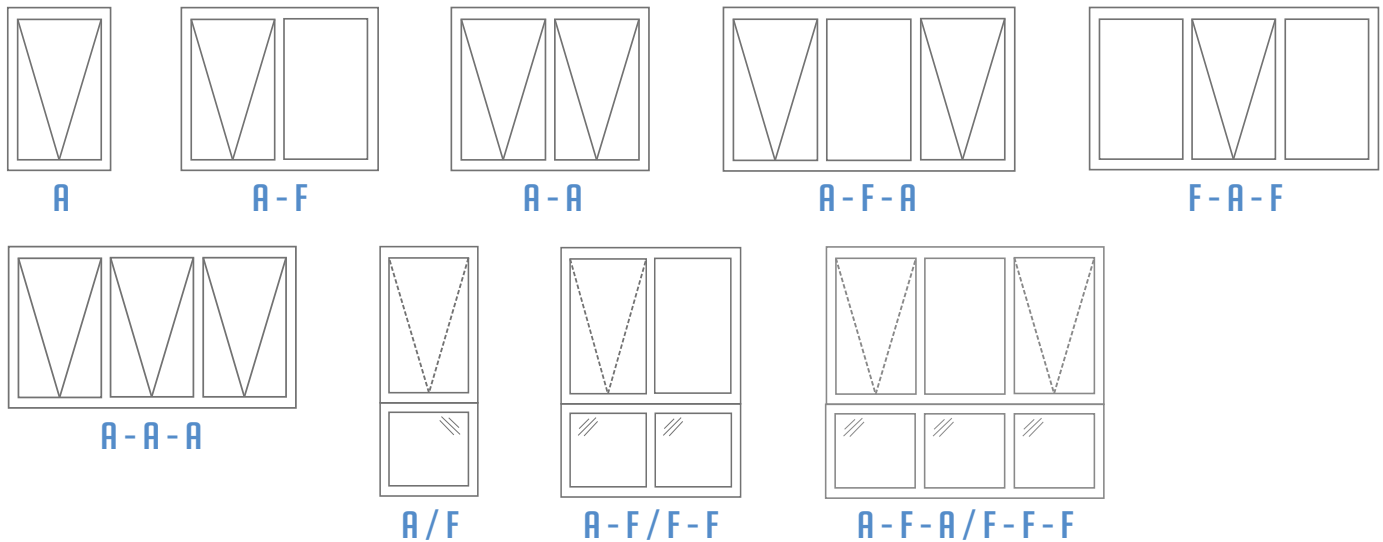
DESIGN FEATURES

	53 mm	76 mm
Flyscreen available with simple clip system	●	●
Maximum weight per panel	27 kgs	27 kgs
Maximum height STD	1,500 mm	1,650 mm
Maximum height with additional latches	2,100 mm	2,100 mm
Maximum width	1,200 mm	1,200 mm
Sashes are square cut	na	●
Sashes are mitre cut	●	na
Flush sill for improved aesthetics	na	●

OPTIONS

	53 mm	76 mm
Accepts timber reveals	●	●
Can be coupled to other KlassicView™ systems	●	●
Accepts glass thickness up to 10.38 mm single glazed	●	●
Accepts glass thickness up to 20 mm double glazed	na	●
Wide range of awning combinations available including configurations with sidelights, lowlights and highlights	●	●

STANDARD CONFIGURATIONS



TESTED TO AS2047



KLASSICVIEW™

53 mm Awning Window *
76 mm Awning Window *

TEST REPORT NO.

AZT0027.17
AZT0028.17

WATER RATING PA

300
250

STRUCTURAL PA

600
600

ULTIMATE PA

1,300
1,500

*Performance ratings reflect a specific size and configuration. Test report data may not cover all configurations and sizes.



DOUBLE HUNG WINDOW 53 MM & 76 MM

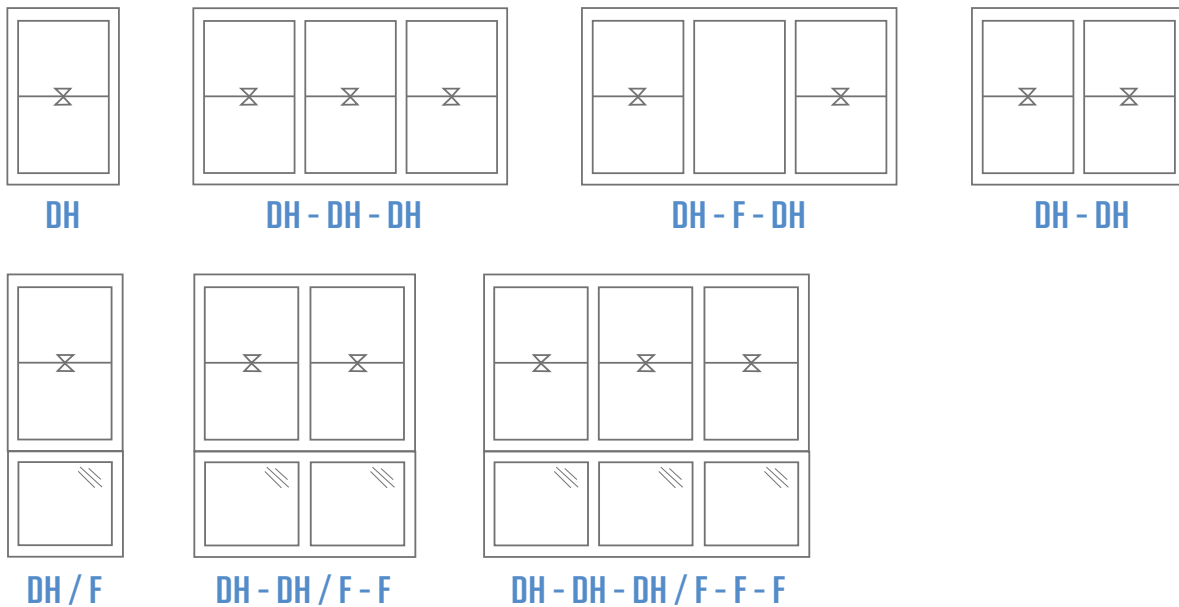
DESIGN FEATURES

	53 mm	76 mm
Flyscreen available	•	•
Maximum weight per panel	21 kgs	21 kgs
Maximum height	2,400 mm	2,400 mm
Maximum width	1,100 mm	1,200 mm
Stylish lift-type handles	na	•
Finger slotted rail	•	•
Lock fitted to the interlocks without the use of a keeper	•	•

OPTIONS

	53 mm	76 mm
Accepts timber reveals	•	•
Accepts glass thickness up to 10.38 mm single glazed	•	na
Accepts glass thickness up to 20 mm double glazed	na	•
Can be coupled to other KlassicView™ systems	•	•

STANDARD CONFIGURATIONS



TESTED TO AS2047



KLASSICVIEW™

	TEST REPORT NO.	WATER RATING PA	STRUCTURAL PA	ULTIMATE PA
53 mm Double Hung Window *	AZT0224.14	200	1,800	2,700
76 mm Double Hung Window *	AZT0148.13	250	1,800	2,800

*Performance ratings reflect a specific size and configuration. Test report data may not cover all configurations and sizes.



LOUVRE WINDOW 101.6 MM

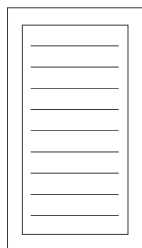
DESIGN FEATURES

Frame	101.6 mm
Flyscreen available	•
Maximum height	2,400 mm
Maximum width	900 mm
Suitable for 6 mm toughened glass and 6 mm aluminium blades	•
Frame accepts flyscreen without the use of clips	•

OPTIONS

Frame	101.6 mm
Accepts timber reveals	•
Can be coupled to other ClassicView™ systems	•
Left or right-sided controls available	•
Locking available for the louvre blades	•

STANDARD CONFIGURATIONS



LV

TESTED TO AS2047



KLASSICVIEW™	TEST REPORT NO.	WATER RATING PA	STRUCTURAL PA	ULTIMATE PA
101.6 mm Louvre Window *	AZT0149.13	150	NA	4,000

*Performance ratings reflect a specific size and configuration. Test report data may not cover all configurations and sizes.



101.6 MM SLIDING DOOR & 165 MM SLIDING STACKING DOOR

DESIGN FEATURES

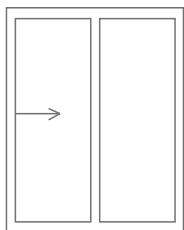
Frame	101.6 mm Sliding Door	165 mm Stacking Door
Flyscreen track built into the frame system	•	•
Maximum height	2,500 mm [#]	2,500 mm [#]
Maximum panel width	1,350 mm	1,350 mm
Maximum weight per panel	120 kgs	120 kgs
Self-draining sill	•	•

[#] Maximum height dependant on site conditions, theoretical strength charts and panel widths.

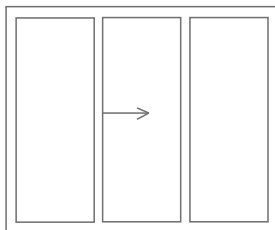
OPTIONS

Frame	101.6 mm Sliding Door	165 mm Stacking Door
Accepts timber reveals	•	na
Can be coupled to other ClassicView™ systems	•	•
Accepts glass thickness 5 mm - 10.38 mm single glazed	•	•
Accepts glass thickness up to 20 mm double glazed	•	•
Double track available for a variety of door combinations	•	na
Triple track available for a variety door combinations	na	•
Wide range of slide-fixed design combinations available including configurations with lowlights	•	•

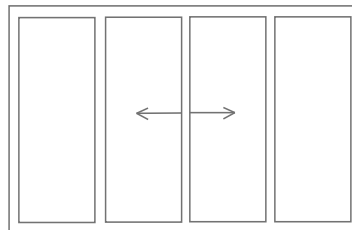
STANDARD CONFIGURATIONS



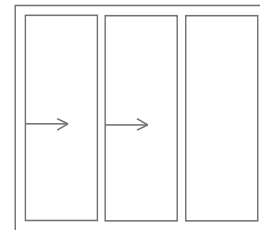
S-F



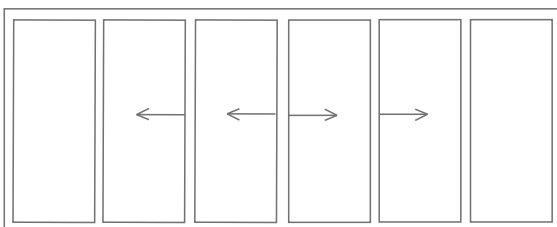
F-S-F



F-S-S-F



S-S-F



F-S-S-S-S-F

TESTED TO AS2047



KLASSICVIEW™

	TEST REPORT NO.	WATER RATING PA	STRUCTURAL PA	ULTIMATE PA
Sliding Door *	AZT2586.12	200	1,350	2,000
Sliding Stacking Door *	AZT0283.12	250	850	1,330

*Performance ratings reflect a specific size and configuration. Test report data may not cover all configurations and sizes.



FRENCH DOOR

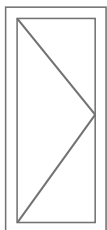
DESIGN FEATURES

Frame	132 mm
Available in single or double panel combinations	•
Inward or outward opening doors	•
Single and double glazing available with glass sizes 4mm - 10.3mm single glazed and up to 20mm double glazed	•
Adjustable hinges	•
Maximum height of 2400mm and width of 900mm panels	•

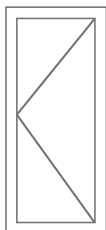
OPTIONS

Frame	132 mm
Accepts timber reveals	•
Inward and outward opening sills	•
Single and double doors	•
Can be coupled to the full KlasicView™ range of window and doors with the use of variety of adaptors	•

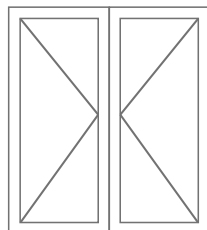
STANDARD CONFIGURATIONS



FD

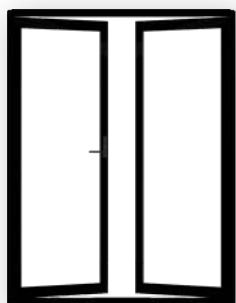


FD



FD - FD

TESTED TO AS2047



KLASSICVIEW™

	TEST REPORT NO.	WATER RATING PA	STRUCTURAL PA	ULTIMATE PA
French Door Single Outward	AZT0391.15	200	1,800	3,000
French Door Single Inward	AZT0392.15	250	1,800	3,000
French Door Double Inward	AZT0409.16	250	900	1,300
French Door Double Outward	AZT0393.15	200	800	1,500

*Performance ratings reflect a specific size and configuration. Test report data may not cover all configurations and sizes.



BAL40 BUSHFIRE RATED

A BAL rating is a Bushfire Attack Level (BAL) used to determine the potential for bushfire on a property.

BAL40 is the highest rating before direct exposure to flames level and specifically refers to an increase in radiant heat from burning debris ignited by windborne embers.

A BAL40 test was recently performed on the following ClassicView™ systems:

- ClassicView™ 76mm Awning Window
- ClassicView™ 76mm Fixed Frame
- ClassicView™ 76mm Sliding Window
- ClassicView™ Sliding Stacking Door
- ClassicView™ French Door

Warringtonfire conducted the BAL40 test in June 2021, in accordance with the requirements outlined in AS1530.8.1

The above mentioned systems exceeded testing requirements and was able to withstand temperatures of up to 40kW without compromising the frame and glazing system.

These systems are rated for BAL40 and can provide protection against ember attacks, burning debris, and exposure to flames.

TESTED TO AS2047

Under the Building Code of Australia, we are required to produce windows and doors that meet mandatory minimum specifications under Australian Standard (AS) 2047 – including AS1288.

SIMULATIONS OF HIGH WINDS AND DRIVING RAINS

AS4420.2 Deflection Test - positive and negative wind pressures are applied to the face of the window to test the maximum deflection under wind load.

AS4420.5 Water Penetration Resistance Test - to verify that no water leaks through the window into the building.

OPERATING FORCE REQUIREMENT

AS4420.3 Operating Force Test – to verify that an opening sash is capable of opening and closing without undue effort.

AIR INFILTRATION PRESSURE

AS4220.4 Air In filtration Test – the air leakage of a window is tested to ensure energy and acoustic efficiency.

ULTIMATE STRENGTH TESTING

AS4420.6 Ultimate Strength Test – negative and positive wind pressures are applied to the window to at least 1.5 times the design wind pressure to ensure it does not fail in unusual wind conditions.





SYDNEY HEAD OFFICE

8 Tyrone Place, Erskine Park NSW 2759

Tel: (02) 8887 2888

Fax: (02) 9834 3244

Email: sales@darleyaluminium.com.au

MELBOURNE

10 Bridge Road, Keysborough VIC 3173

Tel: (03) 9238 3888

Fax: (03) 9768 7288

Email: salesvic@darleyaluminium.com.au

BRISBANE

29 Access Avenue, Yatala QLD 4207

Tel: (07) 3287 1888

Fax: (07) 3287 2088

Email: salesqld@darleyaluminium.com.au

PERTH

36 Armstrong Road, Hope Valley WA 6165

Tel: (08) 9437 2999

Fax: (08) 9437 1024

Email: saleswa@darleyaluminium.com.au

Contact your local fabricator:



AUSTRALIAN
**GLASS &
WINDOW**
ASSOCIATION
MEMBER